

# N-TRADER PRO

# SCALPER

## System Manual

### Risk warning

Before you begin trading on Real account please carefully consider your investment goals, risk and experience you have. It should be noted that Forex is a leverage based market. It should be remembered that leverage can work both in your advantage and disadvantage as well. Therefore there is high risk of losing a part or all of your financial input placed on your account and because of that you should remember to trade with the amount of money which you can lose without taking any influential financial damage.

### Disclaimer

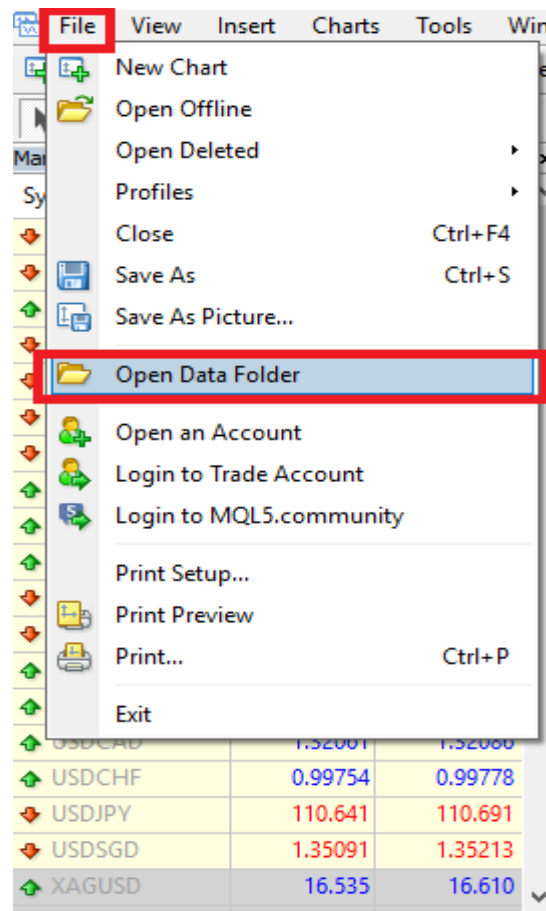
Signals generated by the system are not investment recommendations. All materials included on the website, as well as all system components (indicators, instruction manual) are for educational purposes only. Creators of the system will not take any responsibility for any profit or loss/damage caused by using the system.

Copyright © 2026 [www.elitefxsystems.com](http://www.elitefxsystems.com) All rights reserved.

Unless otherwise indicated, all materials on these pages are copyrighted. All rights reserved. No part of these pages, either text or image may be used for any purpose other than personal use. Therefore, reproduction, modification, in any form or by any means, electronic, or otherwise, for reasons other than personal use, is strictly prohibited without prior written permission.

# 1. Installation proces.

- Open your MT4
- Click 'File/Open Data Folder' from the top tab.



- Copy template file to the 'Templates' folder.

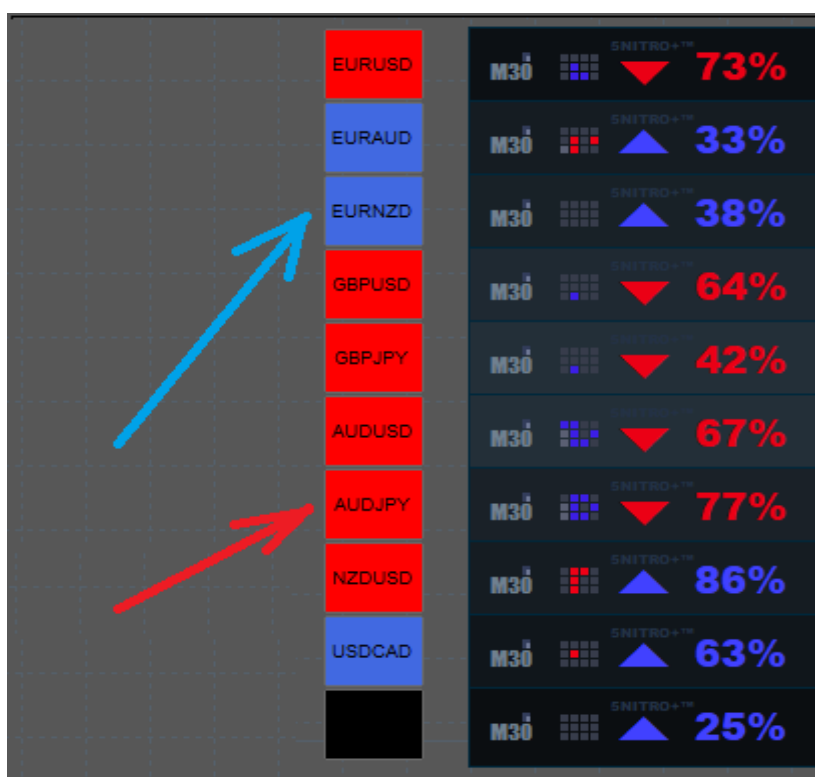
config	15.06.2018 14:09
history	08.05.2018 16:03
logs	16.06.2018 09:40
MQL4	08.05.2018 16:01
profiles	13.06.2018 10:20
templates	15.06.2018 22:52
tester	13.06.2018 10:44
origin	08.05.2018 16:01

- Copy indicator files to the 'MQL4>Indicators' folder.

Experts	08.05.2018 16:02
Files	08.05.2018 16:01
Images	08.05.2018 16:01
Include	08.05.2018 16:01
Indicators	15.06.2018 22:29
Libraries	08.05.2018 16:02
Logs	16.06.2018 09:40
Presets	08.05.2018 16:01
Projects	08.05.2018 16:01
Scripts	08.05.2018 16:02

- Restart your MT4 - Open your favourite chart. Press the right mouse button and pick N-TRADER-PRO template.

**NOTE: We recommend to keep the software on limited number of charts. The software is taking live data feed from the whole market. You can easily switch the pairs just by clicking the names of it on the dashboard.**



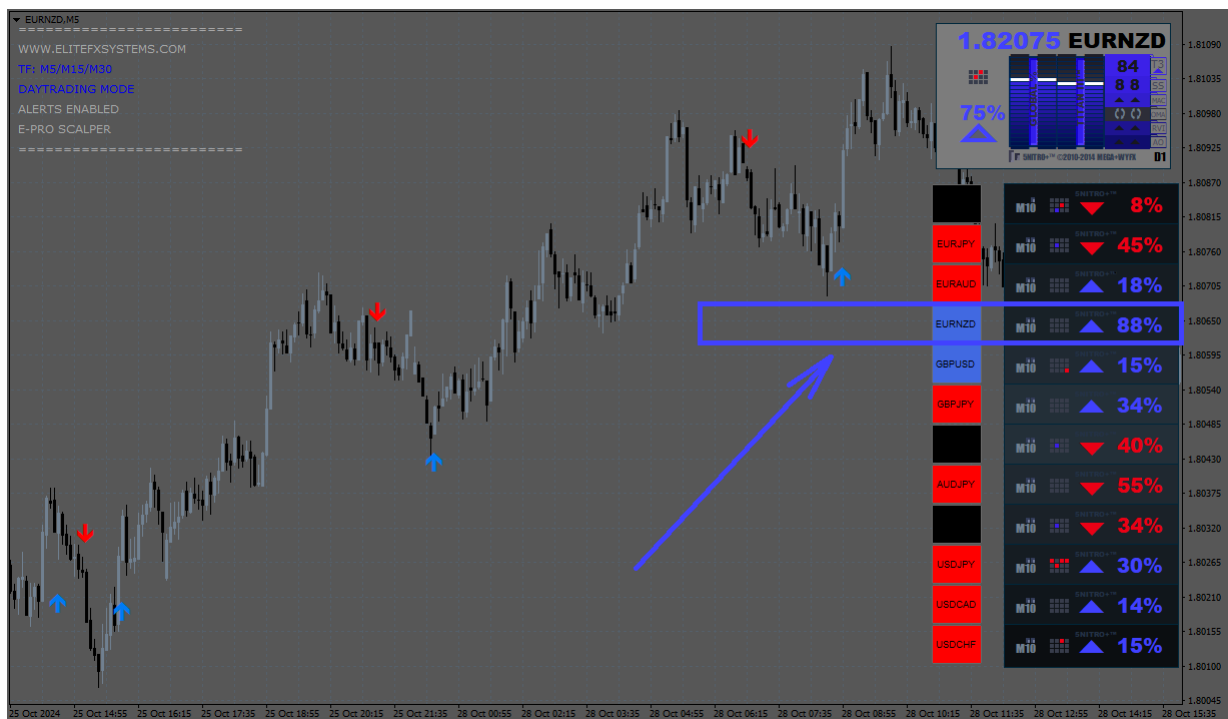
## SYSTEM RULES

Software provides easy signals. After the signal is generated you will receive an instant alert.

**BUY SIGNALS – BLUE UP ARROW**

**SELL SIGNALS – BLACK DOWN ARROW**

Before taking a trade, please make sure, that the currency is bought or sold on the market.



## ENTRY EXAMPLE:

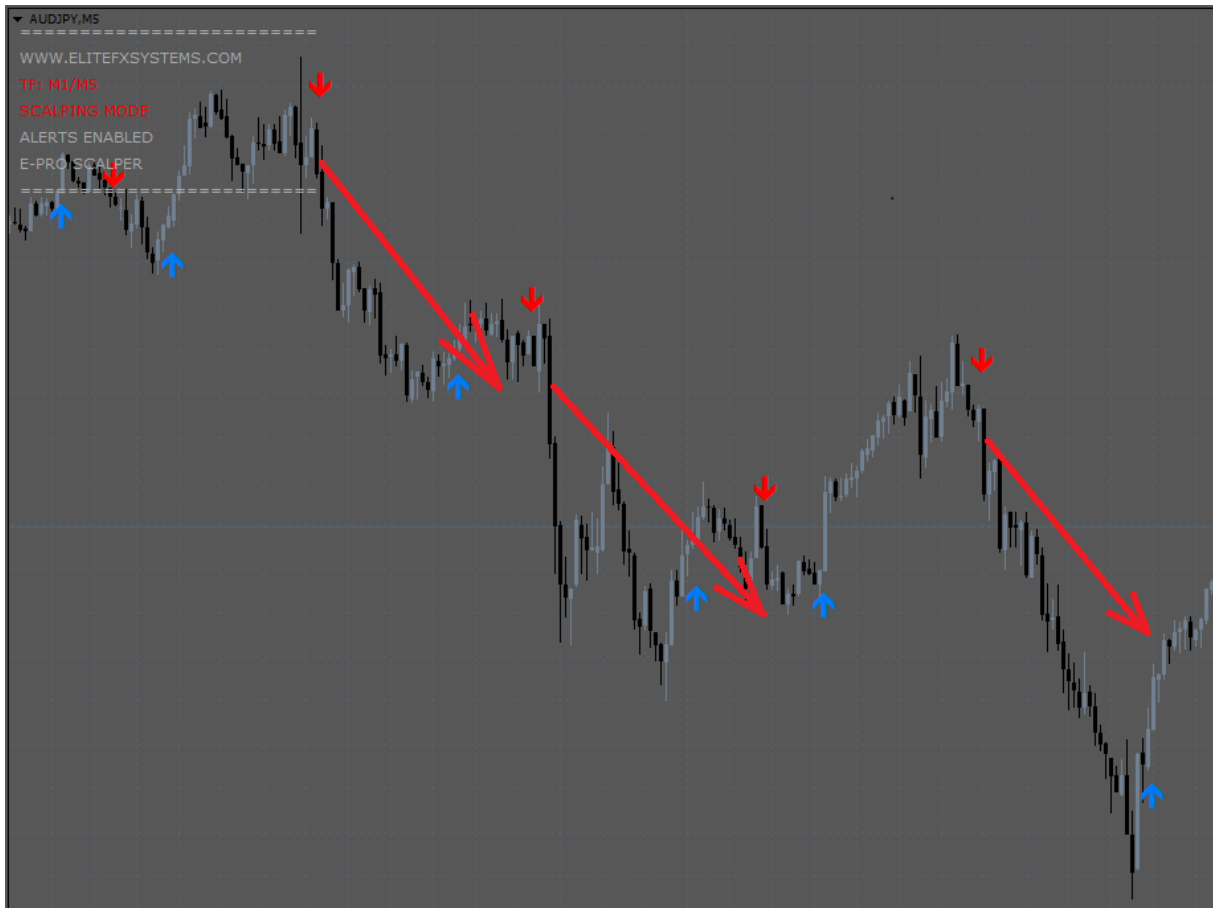
1. The first thing we want to check is the dashboard. On the left side, we can see all the pair names with color. The rules are simple:

BLUE PAIR – BUY MARKET, RED PAIR – SELL MARKET, BLACK SPACE – RANGE.



2. Now we need to find the biggest momentum on the pair.

In this example we can see that the AUDJPY has red trend and 88% momentum. We switch to this pair (click on the red 'AUDJPY' and wait for the next SELL signal).

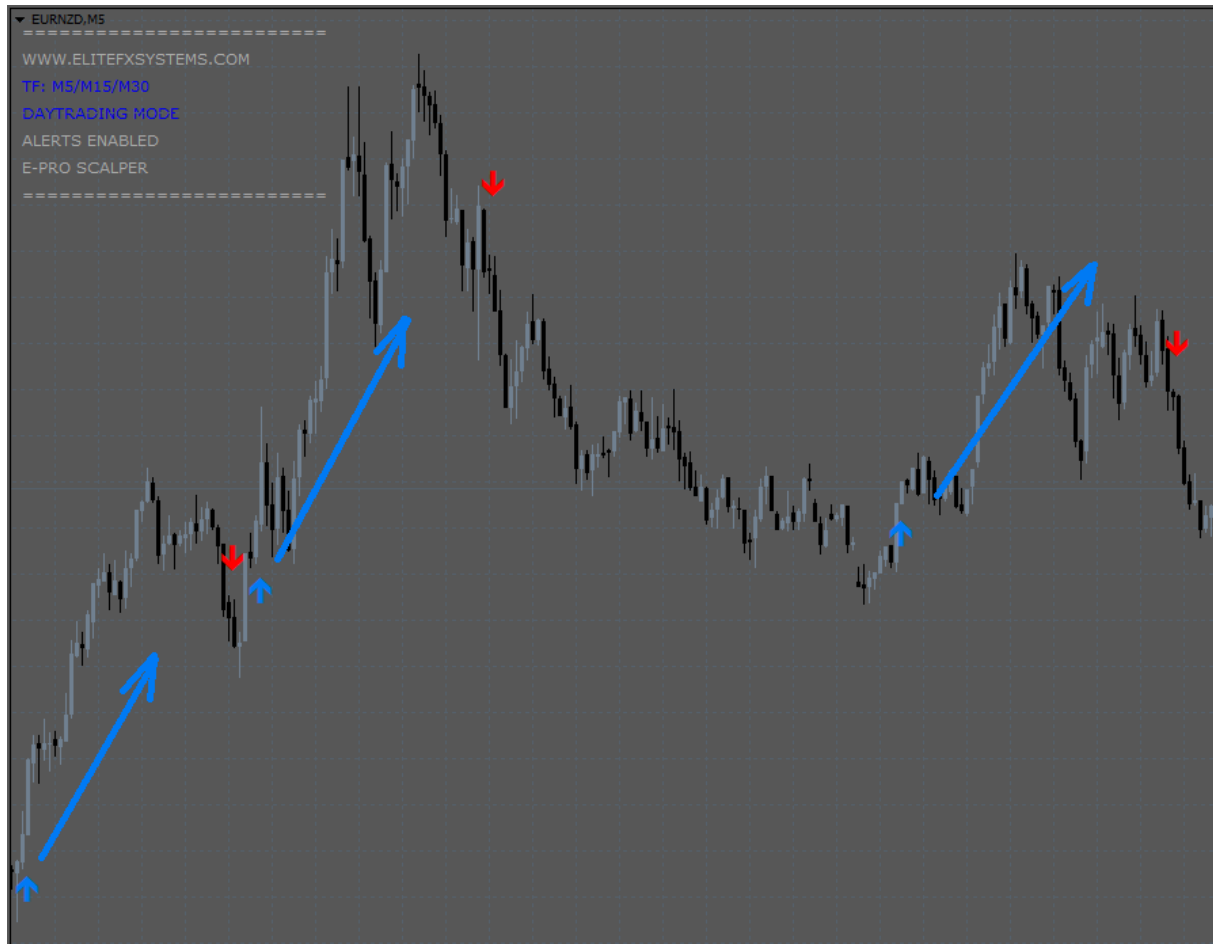


## ENTRY EXAMPLE:

It works the very same way with BUY signals. We just need to find BLUE pair name and the biggest trading momentum.

EURUSD	HT2	SNITRO+™	8%
EURJPY	HT2	SNITRO+™	30%
EURAUD	HT2	SNITRO+™	51%
EURNZD	HT2	SNITRO+™	73%
GBPUSD	HT2	SNITRO+™	22%
GBPJPY	HT2	SNITRO+™	25%
AUDUSD	HT2	SNITRO+™	34%
AUDJPY	HT2	SNITRO+™	8%
	HT2	SNITRO+™	47%
USDJPY	HT2	SNITRO+™	10%
USDCAD	HT2	SNITRO+™	29%
USDCHF	HT2	SNITRO+™	19%

Now we can follow the trend waiting for new BUY trading signal.





## SETTINGS

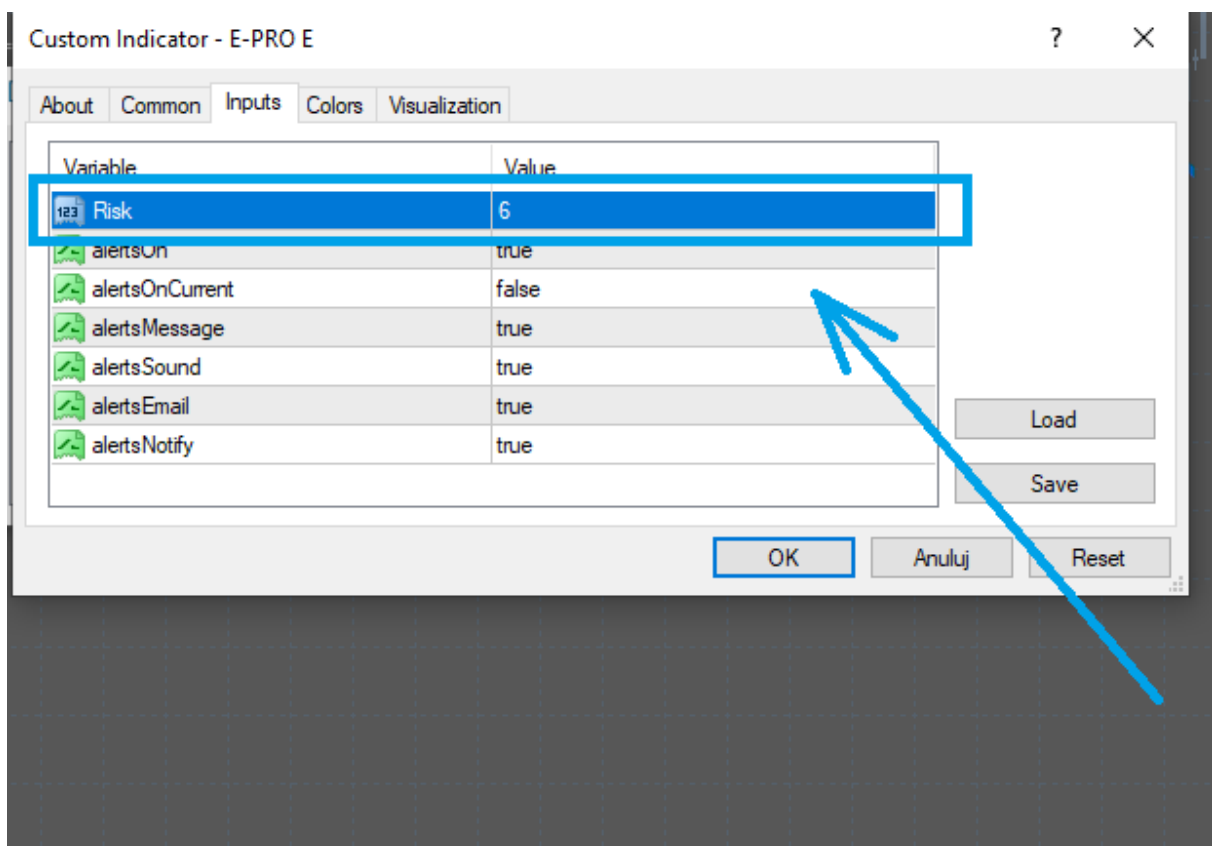
One of the most important setting of the software is 'Risk' feature. It determines how fast/slow the entry will be generated.

We recommend those values for the trading:

'6' - fast scalping. Entries are very fast. Great for scalping on m1/m5.

'9' – daytrading. Fast and more balanced signals in terms of risk/reward signals. Great for daytrading on m5/m15

'12' – conservative daytrading. Slower, but also more confirmed signals for m5/m15 daytrading.



## STOP LOSS

Stop loss should be placed:

- Below the last swing low for BUY trades
- Above the last swing high for SELL trades

## TAKE PROFIT

Take profit should be placed:

- Opposite signal
- R:R=1:1 when market is normal (low or standard volatility)
- R:R=2:1 when market is fast (high volatility)

If you need any assistance let us know!

[support@elitefxsystems.com](mailto:support@elitefxsystems.com)